

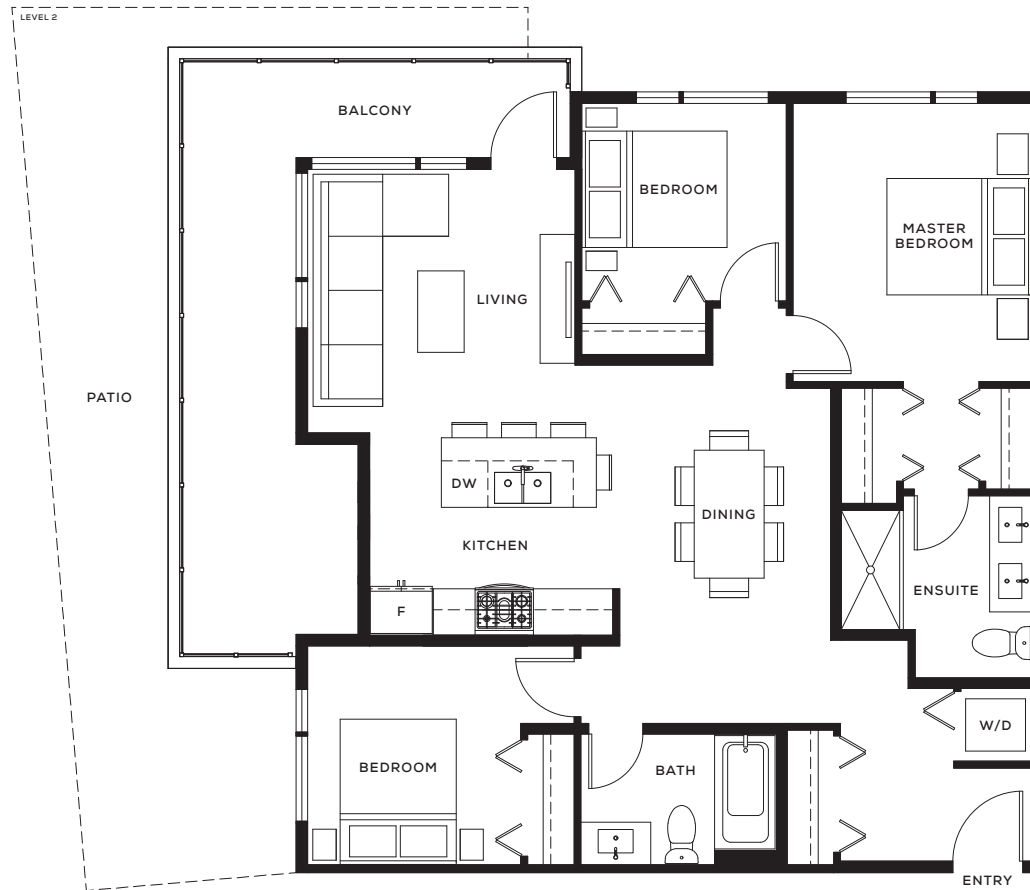
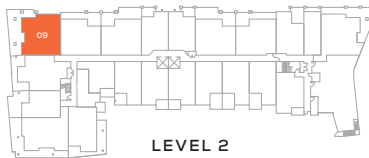
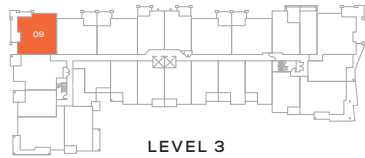
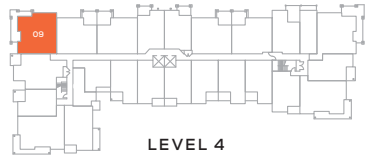
# Clyde



Three Bedrooms  
+ Two Bathrooms

Interior Area: 1,019 SF  
Exterior Area: 271 - 309 SF

ST. JOHNS ST.



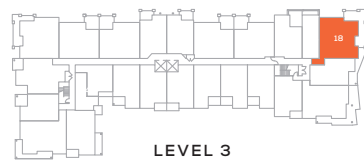
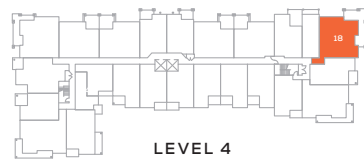
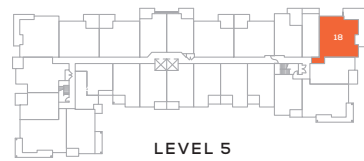
# Clyde

## E1

Three Bedrooms  
+ Two Bathrooms

Interior Area: 1,077 SF  
Exterior Area: 271 - 309 SF

ST. JOHNS ST 

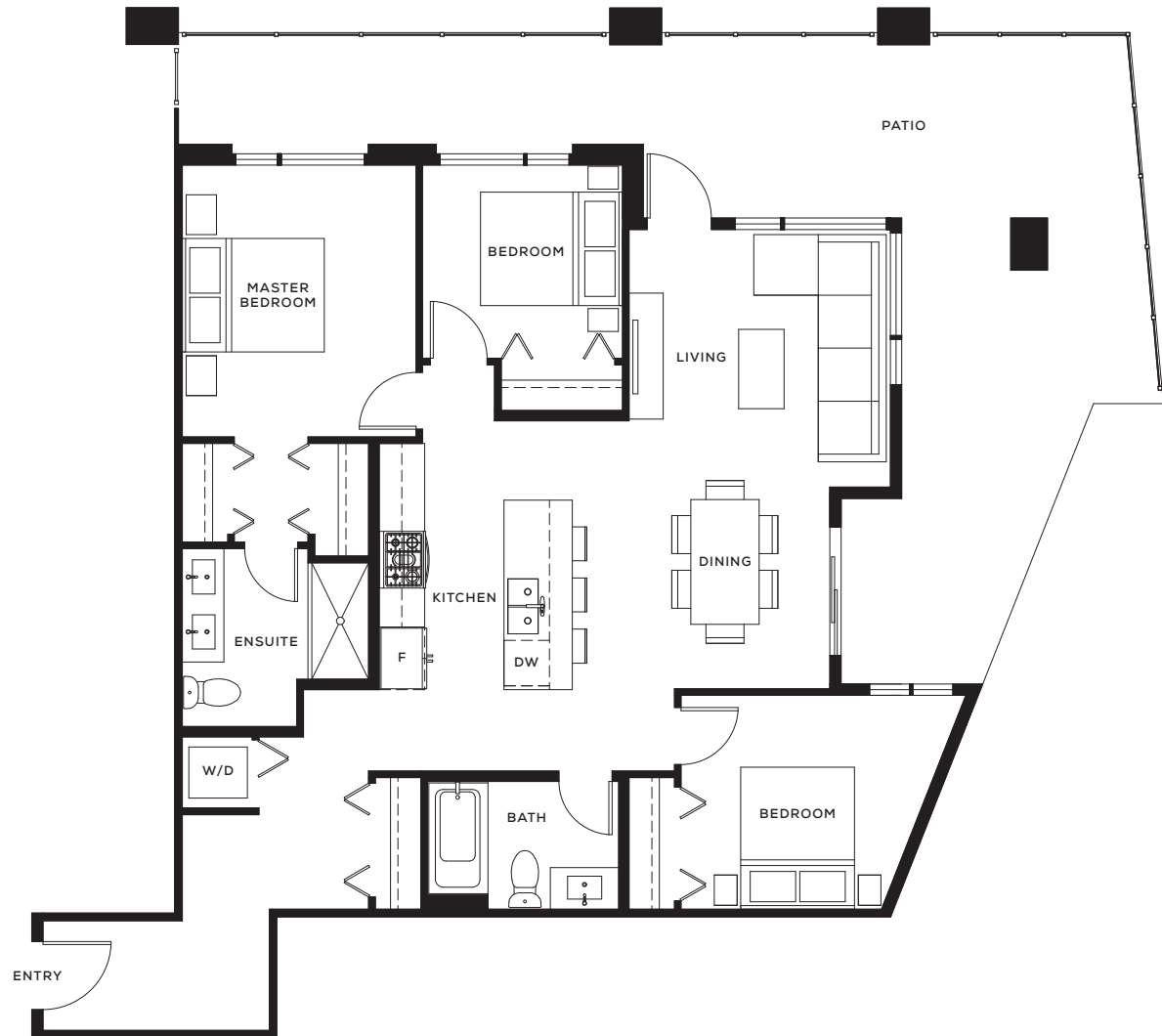


# Clyde

## E1\*

Three Bedrooms  
+ Two Bathrooms

Interior Area: 1,093 SF  
Exterior Area: 406 SF



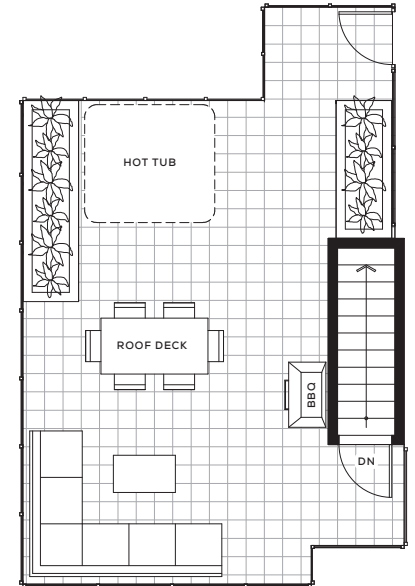
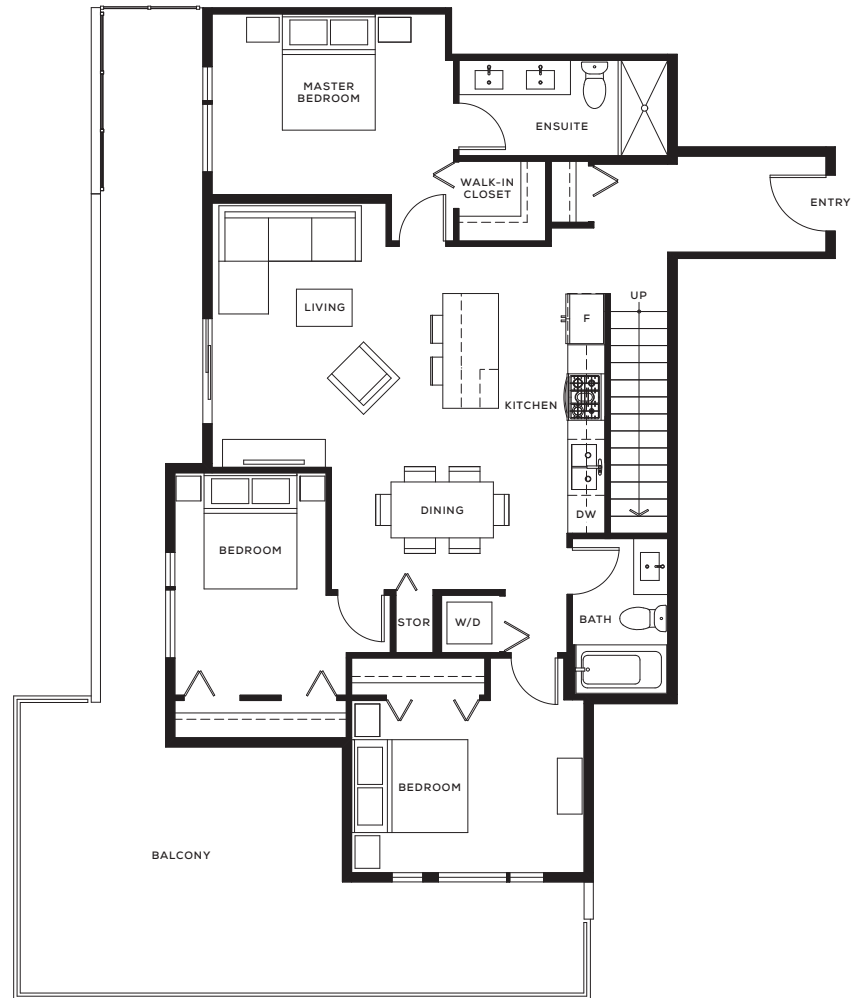
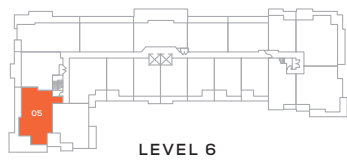
# Clyde

## E2

Three Bedrooms  
+ Two Bathrooms

Interior Area: 1,166 SF  
Exterior Area: 504 SF  
Rooftop Patio: 493 SF

ST. JOHNS ST ^  
N



# Clyde

## E3

Three Bedrooms  
+ Two Bathrooms

Interior Area: 1,172 SF  
Exterior Area: 464 SF  
Rooftop Patio: 502 SF

ST. JOHNS ST



LEVEL 6

