

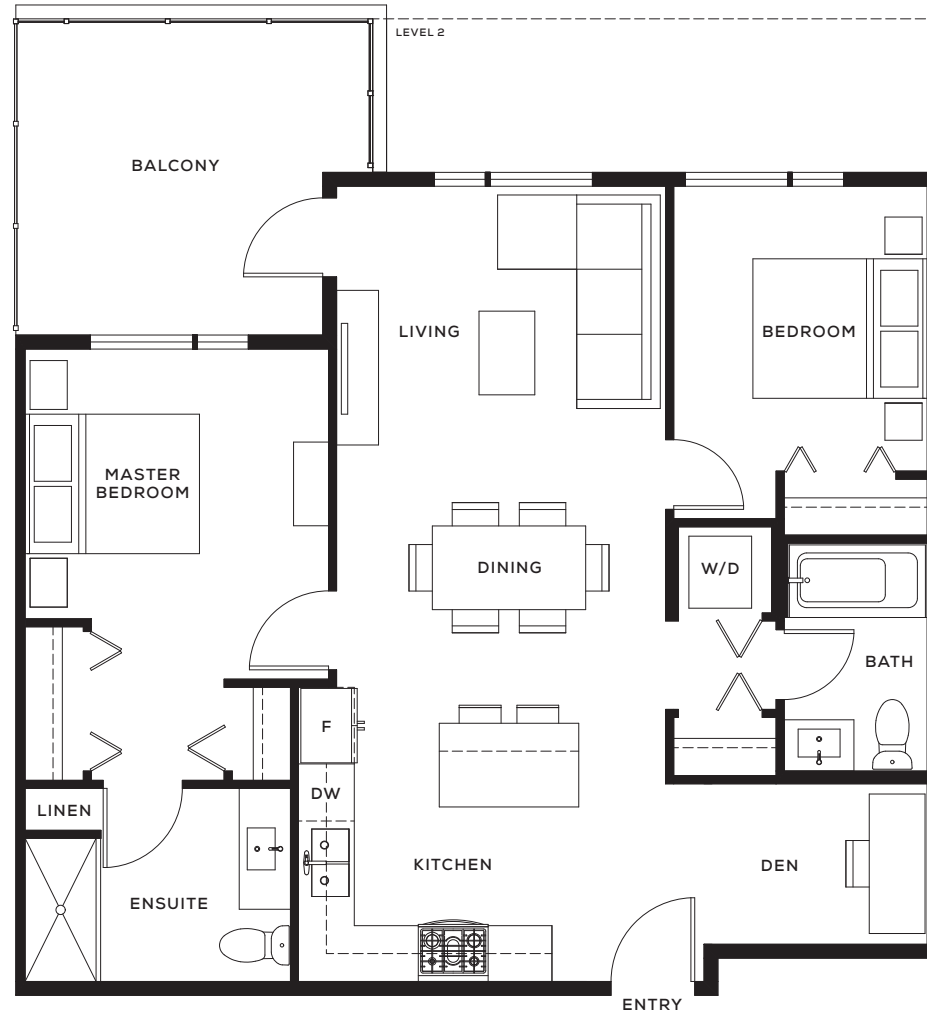
Clyde

D

Two Bedroom + Den
+ Two Bathrooms

Interior Area: 893 SF
 Exterior Area: 129 - 238 SF

ST. JOHNS ST ^
N



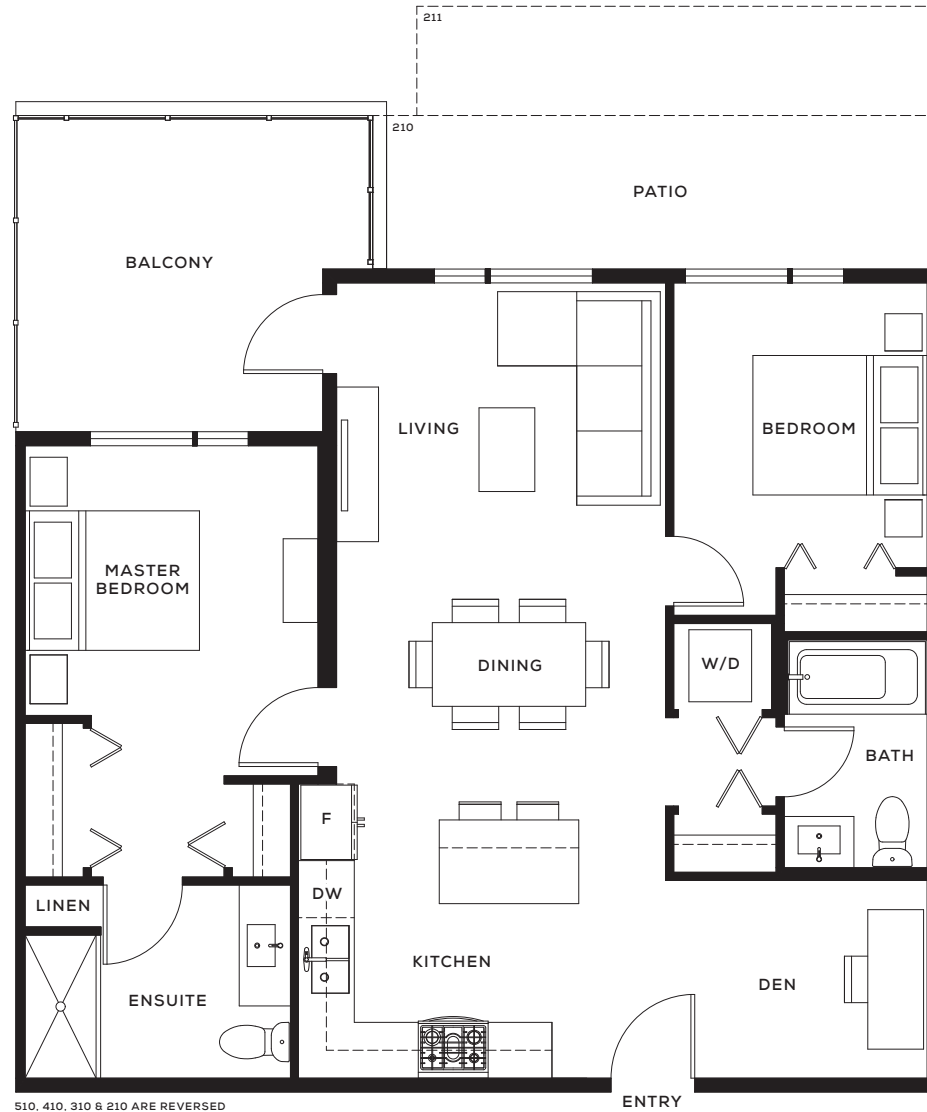
Clyde

D1/D1*

Two Bedroom + Den
+ Two Bathrooms

Interior Area: 893 - 901 SF
Exterior Area: 129 - 315 SF

ST. JOHNS ST 

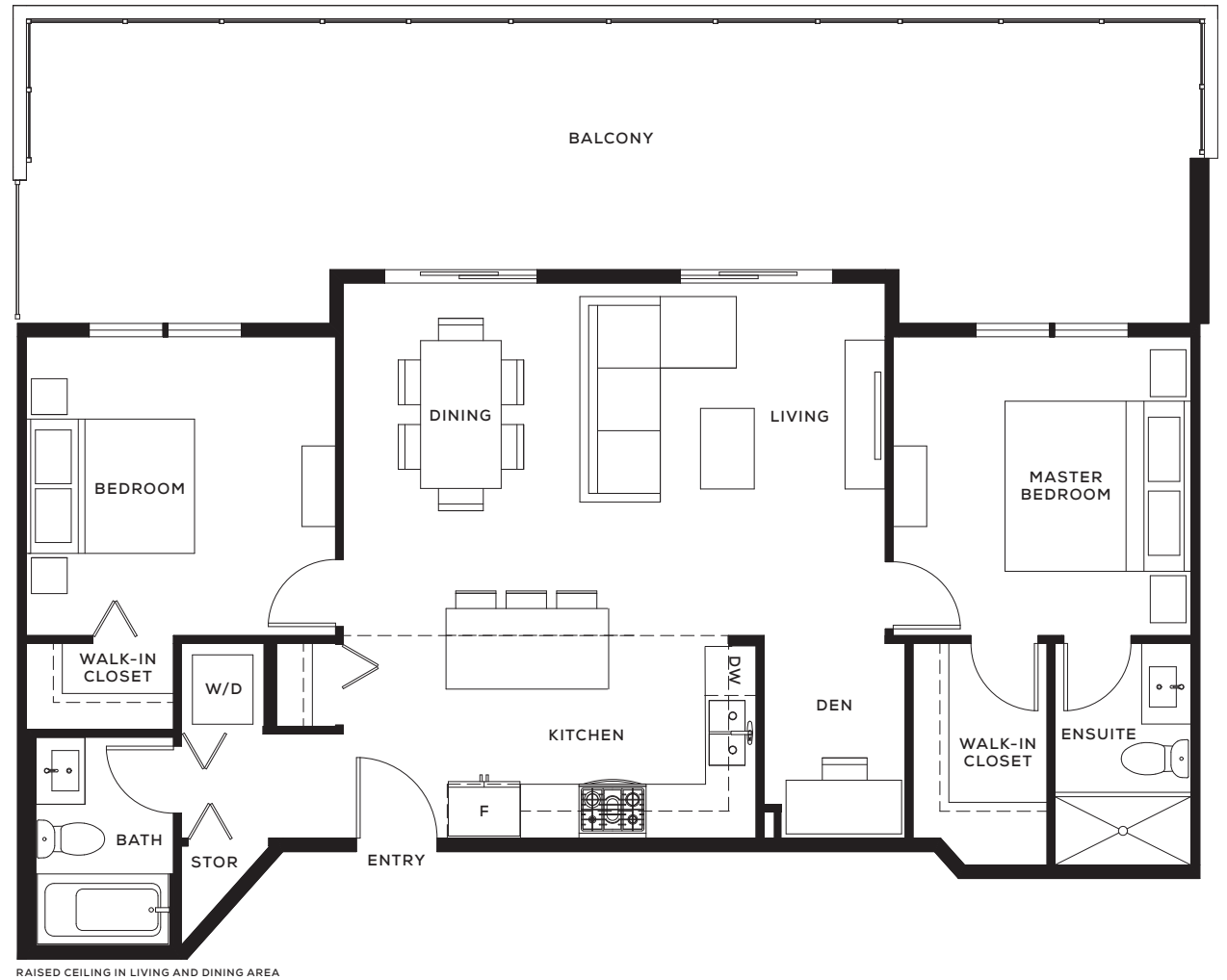


Clyde

D2

Two Bedroom + Den
+ Two Bathrooms

Interior Area: 938 SF
Exterior Area: 451 SF



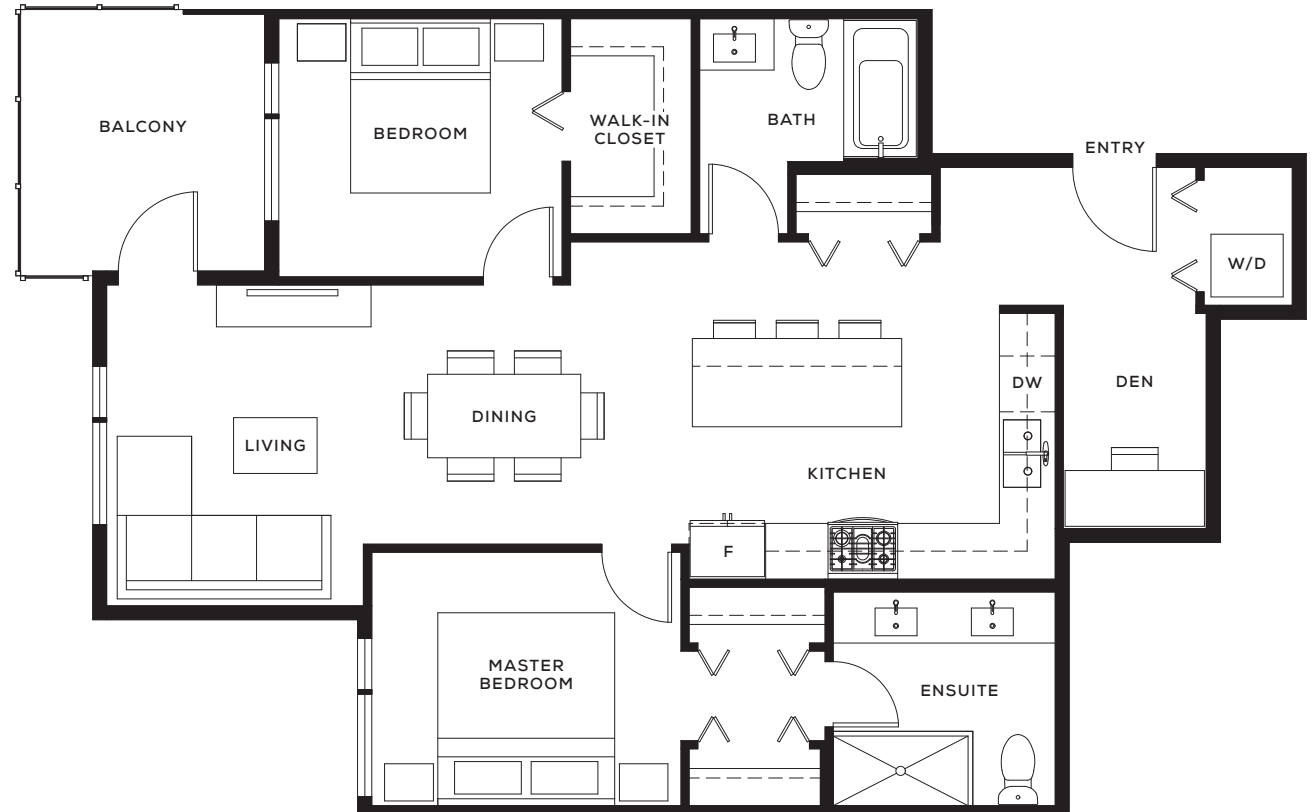
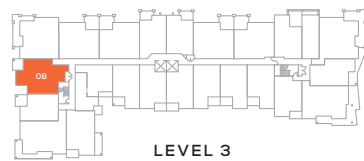
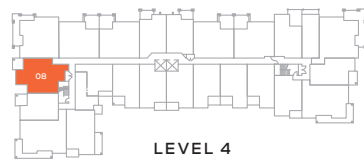
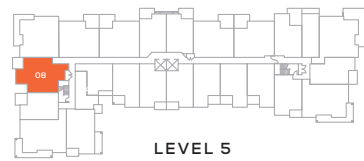
Clyde

D3

Two Bedroom + Den
+ Two Bathrooms

Interior Area: 942 SF
Exterior Area: 83 SF

ST. JOHNS ST 

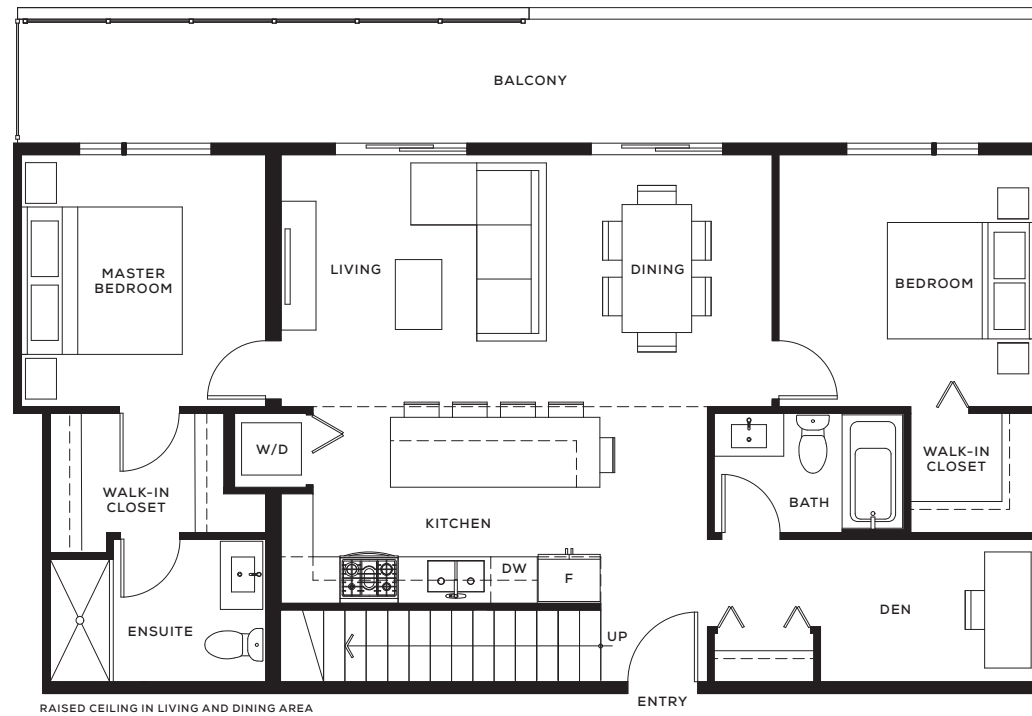
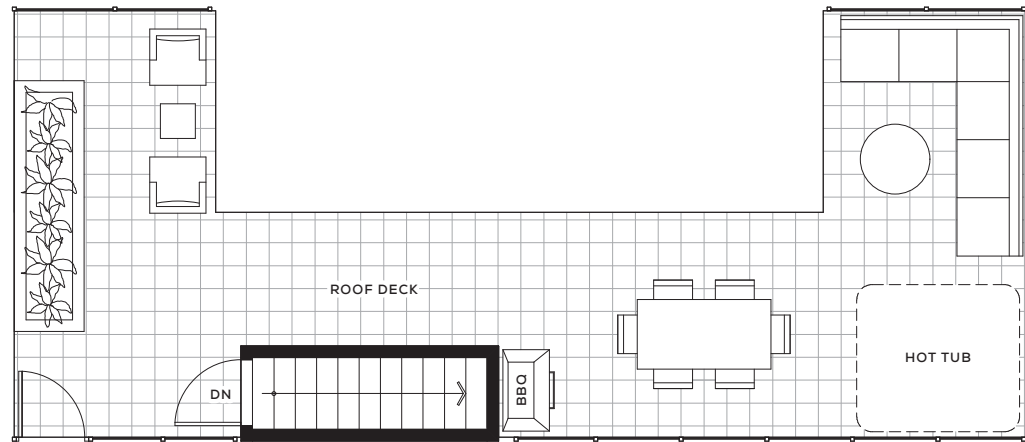


Clyde

D4

Two Bedroom + Den
+ Two Bathrooms

Interior Area: 1,055 SF
Exterior Area: 235 SF
Rooftop Patio: 527 SF



Clyde

ID5

Two Bedroom + Den
+ Two Bathrooms

Interior Area: 1,005 SF
Exterior Area: 140 SF
Rooftop Patio: 479 SF

